

**Validated for transport applications**



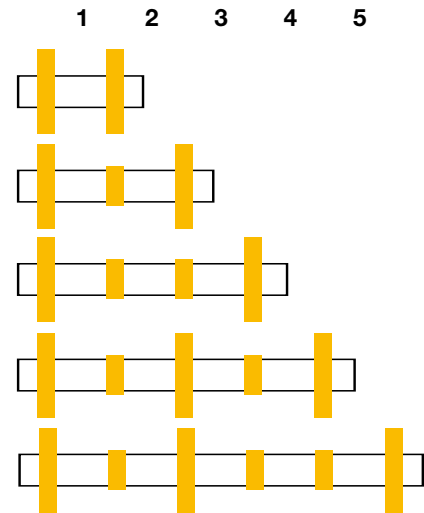
As you would expect from a member of the Rail Industry Association, Global air preparation meets the test specification standards enabling the Global series to be used as a validated product in a variety of rail applications.



**Railway Industry Association**

**CEI/ICE 61373 1999-1 Category 2 (BS EN 61373:1999)**

**Position of T-Brackets for multiple units**



**Recommended mounting / fixation method for use in transportation applications.**

- The use of a port block kit and T-bracket should be used at all times (angle / L-brackets should not be used in rail applications)
- Additional security is recommended with the use of 'vibration proof adhesive' on the wall mounting screws to the port / connector block
- Inlet (P1) and Outlet (P2) ports should always have a T-Bracket fixation to eliminate product canterlever stress
- 'L' brackets should not be used in the use for rail service



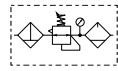
For illustration purposes only



**Popular Combinations:** Inlet pressure 10 bar (145 psig), Secondary pressure 6.3 bar (91.3 psig), 1 bar (14.5 psig) pressure drop.



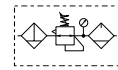
**Filter + Regulator + Lubricator Combinations, Poly bowl**  
**5 micron element, 8 bar (116 psig) regulator + gauge and wall mounting brackets**



Port size	Flow	Manual drain	Weight	Pulse drain	Weight
1/4"	13 dm <sup>3</sup> /s 27 (scfm)	<b>P31CB12GEMNTLNW</b>	0.46 kg (1.01 lbs)	<b>P31CB12GEBNTLNW</b>	0.46 kg (1.01 lbs)



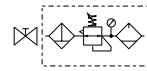
**Filter/Regulator + Lubricator Combinations, Poly bowl**  
**5 micron element, 8 bar (116 psig) regulator + gauge and wall mounting brackets**



Port size	Flow	Manual drain	Weight	Pulse drain	Weight
1/4"	14 dm <sup>3</sup> /s 28 (scfm)	<b>P31CA12GEMNTLNW</b>	0.35 kg (0.77 lbs)	<b>P31CA12GEBNTLNW</b>	0.35kg (0.77 lbs)



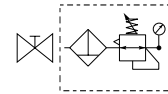
**Ball Valve + Filter/Regulator + Lubricator Combinations, Poly bowl**  
**5 micron element, 8 bar (116 psig) regulator + gauge and wall mounting brackets**



Port size	Flow	Manual drain	Weight	Pulse drain	Weight
1/4"	14 dm <sup>3</sup> /s 28 (scfm)	<b>P31QA12GEMNTLNW</b>	0.35 kg (0.77 lbs)	<b>P31QA12GEBNTLNW</b>	0.35kg (0.77 lbs)



**Ball Valve + Filter/Regulator Combinations + Poly bowl**  
**5 micron element, 8 bar Regulator + Gauge and Wall Mounting Brackets**



Port size	Flow	Manual drain	Weight	Pulse drain	Weight
1/4"	14 dm <sup>3</sup> /s 28 (scfm)	<b>P31QN12GEMNTW</b>	0.4 kg (0.88 lbs)	<b>P31QN12GEBNTW</b>	0.4 kg (0.88 lbs)

<b>P 3 1</b>					<b>E</b>		<b>N</b>		<b>LN</b>	<b>W</b>		
<b>Combination</b>		<b>Thread type</b>		<b>Port size</b>	<b>Drain type</b>		<b>Adjustment range</b>		Add only for options with Lubricator			
Combination <b>C</b>		BSPP <b>1</b>	NPT <b>9</b>	1/4 <b>2</b>	Manual drain <b>M</b>	<b>With square gauge</b>						
Shut off + Combi <sup>1</sup> <b>Q</b>					Pulse drain <b>B</b>	2 bar * <b>V</b>						
<b>Combination type</b>		<b>Bowl type</b>			<b>Without gauge</b>							
F/R+L <b>A</b>	F+R+L <b>B</b>	F/R <b>N</b>	Poly bowl with bowl guard <b>G</b>	Metal bowl without sight glass <b>M</b>	4 bar <b>S</b>	8 bar ** <b>T</b>	2 bar <b>Y</b>				4 bar <b>L</b>	8 bar <b>N</b>

**Note:** All bowl types are the same for each component

**Example:** If a "G" is specified for a F+L, both units would get a poly bowl with bowl guard.

\* Unit comes with 0-4 bar, gauge respectively

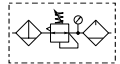
\*\* Unit comes with 0-10 bar, gauge respectively

<sup>1</sup> Option not available with F+R+L  
 Bar gauges fitted to BSPP  
 PSI gauges fitted to NPT

**Popular Combinations:** Inlet pressure 10 bar (145 psig), Secondary pressure 6.3 bar (91.3 psig), 1 bar (14.5 psig) pressure drop.



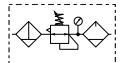
**Filter + Regulator + Lubricator Combinations, Poly bowl**  
**5 micron element, 8 bar (116 psig) regulator + gauge and wall mounting brackets**



Port size	Flow	Manual drain	Weight	Auto drain	Weight
1/4"	20 dm³/s 42 (scfm)	<b>P32CB12GEMNGLNW</b>	1.29 kg (2.84 lbs)	<b>P32CB12GEANGLNW</b>	1.29 kg (2.84 lbs)
3/8"	32 dm³/s 68 (scfm)	<b>P32CB13GEMNGLNW</b>	1.29 kg (2.84 lbs)	<b>P32CB13GEANGLNW</b>	1.29 kg (2.84 lbs)
1/2"	40 dm³/s 85 (scfm)	<b>P32CB14GEMNGLNW</b>	1.29 kg (2.84 lbs)	<b>P32CB14GEANGLNW</b>	1.29 kg (2.84 lbs)



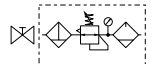
**Filter/Regulator + Lubricator Combinations, Poly bowl**  
**5 micron element, 8 bar (116 psig) regulator + gauge and wall mounting brackets**



Port size	Flow	Manual drain	Weight	Auto drain	Weight
1/4"	22 dm³/s 45 (scfm)	<b>P32CA12GEMNGLNW</b>	1.03 kg (2.27 lbs)	<b>P32CA12GEANGLNW</b>	1.03 kg (2.27 lbs)
3/8"	33 dm³/s 70 (scfm)	<b>P32CA13GEMNGLNW</b>	1.03 kg (2.27 lbs)	<b>P32CA13GEANGLNW</b>	1.03 kg (2.27 lbs)
1/2"	43 dm³/s 90 (scfm)	<b>P32CA14GEMNGLNW</b>	1.03 kg (2.27 lbs)	<b>P32CA14GEANGLNW</b>	1.03 kg (2.27 lbs)



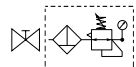
**Ball Valve + Filter/Regulator + Lubricator Combinations, Poly bowl**  
**5 micron element, 8 bar (116 psig) regulator + gauge and wall mounting brackets**



Port size	Flow	Manual drain	Weight	Auto drain	Weight
3/8"	33 dm³/s 70 (scfm)	<b>P32QA13GEMNGLNW</b>	1.03 kg (2.27 lbs)	<b>P32QA13GEANGLNW</b>	1.03 kg (2.27 lbs)
1/2"	43 dm³/s 90 (scfm)	<b>P32QA14GEMNGLNW</b>	1.03 kg (2.27 lbs)	<b>P32QA14GEANGLNW</b>	1.03 kg (2.27 lbs)



**Ball Valve + Filter/Regulator Combinations + Poly bowl**  
**5 micron element, 8 bar Regulator + Gauge and Wall Mounting Brackets**



Port size	Flow	Manual drain	Weight	Auto drain	Weight
3/8"	33 dm³/s 70 (scfm)	<b>P32QN13GEMNGW</b>	1.1 kg (2.42 lbs)	<b>P32QN13GEANGW</b>	1.1 kg (2.42 lbs)
1/2"	43 dm³/s 90 (scfm)	<b>P32QN14GEMNGW</b>	1.1 kg (2.42 lbs)	<b>P32QN14GEANGW</b>	1.1 kg (2.42 lbs)

**P 3 2**      **E**      **N**      **LN**      **W**

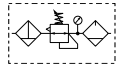
<p><b>Combination</b></p> <table border="1" style="width: 100%;"> <tr><td>Combination</td><td><b>C</b></td></tr> <tr><td>Shut off + Combination <sup>1</sup></td><td><b>Q</b></td></tr> </table> <p><sup>1</sup> Option not available with F+R+L and 1/4" port size (2)</p>	Combination	<b>C</b>	Shut off + Combination <sup>1</sup>	<b>Q</b>	<p><b>Thread type</b></p> <table border="1" style="width: 100%;"> <tr><td>BSPP</td><td><b>1</b></td></tr> <tr><td>NPT</td><td><b>9</b></td></tr> </table>	BSPP	<b>1</b>	NPT	<b>9</b>	<p><b>Port size</b></p> <table border="1" style="width: 100%;"> <tr><td>1/4</td><td><b>2</b></td></tr> <tr><td>3/8</td><td><b>3</b></td></tr> <tr><td>1/2</td><td><b>4</b></td></tr> </table>	1/4	<b>2</b>	3/8	<b>3</b>	1/2	<b>4</b>	<p><b>Drain type</b></p> <table border="1" style="width: 100%;"> <tr><td>Auto drain</td><td><b>A</b></td></tr> <tr><td>Manual drain</td><td><b>M</b></td></tr> </table>	Auto drain	<b>A</b>	Manual drain	<b>M</b>	<p><b>Adjustment range</b></p> <table border="1" style="width: 100%;"> <tr><td colspan="2"><b>With round gauge</b></td></tr> <tr><td>0-2 bar; 0-30 psi; 0.2 MPa</td><td><b>Z</b></td></tr> <tr><td>4 bar; 60 psi; 0.4 MPa</td><td><b>M</b></td></tr> <tr><td>8 bar; 125 psi; 0.8 MPa</td><td><b>G</b></td></tr> <tr><td colspan="2"><b>Without gauge</b></td></tr> <tr><td>2 bar</td><td>Y</td></tr> <tr><td>4 bar</td><td>L</td></tr> <tr><td>8 bar</td><td>N</td></tr> <tr><td>17 bar</td><td>H</td></tr> </table>	<b>With round gauge</b>		0-2 bar; 0-30 psi; 0.2 MPa	<b>Z</b>	4 bar; 60 psi; 0.4 MPa	<b>M</b>	8 bar; 125 psi; 0.8 MPa	<b>G</b>	<b>Without gauge</b>		2 bar	Y	4 bar	L	8 bar	N	17 bar	H	<p>Add only for options with Lubricator</p>
Combination	<b>C</b>																																								
Shut off + Combination <sup>1</sup>	<b>Q</b>																																								
BSPP	<b>1</b>																																								
NPT	<b>9</b>																																								
1/4	<b>2</b>																																								
3/8	<b>3</b>																																								
1/2	<b>4</b>																																								
Auto drain	<b>A</b>																																								
Manual drain	<b>M</b>																																								
<b>With round gauge</b>																																									
0-2 bar; 0-30 psi; 0.2 MPa	<b>Z</b>																																								
4 bar; 60 psi; 0.4 MPa	<b>M</b>																																								
8 bar; 125 psi; 0.8 MPa	<b>G</b>																																								
<b>Without gauge</b>																																									
2 bar	Y																																								
4 bar	L																																								
8 bar	N																																								
17 bar	H																																								
<p><b>Combination type</b></p> <table border="1" style="width: 100%;"> <tr><td>F/R+L</td><td><b>A</b></td></tr> <tr><td>F+R+L</td><td><b>B</b></td></tr> <tr><td>F/R</td><td><b>N</b></td></tr> </table>	F/R+L	<b>A</b>	F+R+L	<b>B</b>	F/R	<b>N</b>	<p><b>Bowl type</b></p> <table border="1" style="width: 100%;"> <tr><td>Poly bowl with bowl guard</td><td><b>G</b></td></tr> <tr><td>Metal bowl with sight glass</td><td><b>S</b></td></tr> </table>		Poly bowl with bowl guard	<b>G</b>	Metal bowl with sight glass	<b>S</b>																													
F/R+L	<b>A</b>																																								
F+R+L	<b>B</b>																																								
F/R	<b>N</b>																																								
Poly bowl with bowl guard	<b>G</b>																																								
Metal bowl with sight glass	<b>S</b>																																								

**Note:** All bowl types are the same for each component  
**Example:** If a "G" is specified for a F+L, both units would get a poly bowl with bowl guard.

**Popular Combinations:** Inlet pressure 10 bar (145 psig), Secondary pressure 6.3 bar (91.3 psig), 1 bar (14.5 psig) pressure drop.



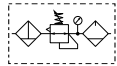
**Filter + Regulator + Lubricator Combinations, Poly bowl  
5 micron element, 8 bar (116 psig) regulator + gauge and wall mounting brackets**



Port size	Flow	Manual drain	Weight	Auto drain	Weight
1/2"	43 dm <sup>3</sup> /s 90 (scfm)	<b>P33CB14GEMNGLNW</b>	1.84 kg (4.06 lbs)	<b>P33CB14GEANGLNW</b>	1.84 kg (4.06 lbs)
3/4"	52 dm <sup>3</sup> /s 110 (scfm)	<b>P33CB16GEMNGLNW</b>	1.84 kg (4.06 lbs)	<b>P33CB16GEANGLNW</b>	1.84 kg (4.06 lbs)



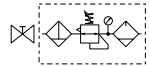
**Filter/Regulator + Lubricator Combinations, Poly bowl  
5 micron element, 8 bar (116 psig) regulator + gauge and wall mounting brackets**



Port size	Flow	Manual drain	Weight	Auto drain	Weight
1/2"	52 dm <sup>3</sup> /s 110 (scfm)	<b>P33CA14GEMNGLNW</b>	1.51 kg (3.33 lbs)	<b>P33CA14GEANGLNW</b>	1.51 kg (3.33 lbs)
3/4"	71 dm <sup>3</sup> /s 150 (scfm)	<b>P33CA16GEMNGLNW</b>	1.51 kg (3.33 lbs)	<b>P33CA16GEANGLNW</b>	1.51 kg (3.33 lbs)



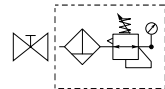
**Ball Valve + Filter/Regulator + Lubricator Combinations, Poly bowl  
5 micron element, 8 bar (116 psig) regulator + gauge and wall mounting brackets**



Port size	Flow	Manual drain	Weight	Auto drain	Weight
1/2"	52 dm <sup>3</sup> /s 110 (scfm)	<b>P33QA14GEMNGLNW</b>	1.51 kg (3.33 lbs)	<b>P33QA14GEANGLNW</b>	1.51 kg (3.33 lbs)
3/4"	71 dm <sup>3</sup> /s 150 (scfm)	<b>P33QA16GEMNGLNW</b>	1.51 kg (3.33 lbs)	<b>P33QA16GEANGLNW</b>	1.51 kg (3.33 lbs)



**Ball Valve + Filter/Regulator Combinations + Poly bowl  
5 micron element, 8 bar Regulator + Gauge and Wall Mounting Brackets**



Port size	Flow	Manual drain	Weight	Auto drain	Weight
1/2"	52 dm <sup>3</sup> /s 110 (scfm)	<b>P33QN14GEMNGW</b>	1.7 kg (3.75 lbs)	<b>P33QN14GEANGW</b>	1.7 kg (3.75 lbs)
3/4"	71 dm <sup>3</sup> /s 150 (scfm)	<b>P33QN16GEMNGW</b>	1.7 kg (3.75 lbs)	<b>P33QN16GEANGW</b>	1.7 kg (3.75 lbs)

**P 3 3**      **E**      **N**      **L N**      **W**

<b>Combination</b>	<b>Thread type</b>	<b>Port size</b>	<b>Drain type</b>	<b>Adjustment range</b>	<b>Add only for options with Lubricator</b>
Combination <b>C</b>	BSPP <b>1</b>	1/2 <b>4</b>	Auto drain <b>A</b>	<b>With round gauge</b>	
Shut off + Combination <sup>1</sup> <b>Q</b>	NPT <b>9</b>	3/4 <b>6</b>	Manual drain <b>M</b>	0-2 bar; 0-30 psi; 0.2 MPa <b>Z</b>	
				4 bar; 60 psi; 0.4 MPa <b>M</b>	
				8 bar; 125 psi; 0.8 MPa <b>G</b>	

<sup>1</sup> Option not available with F+R+L

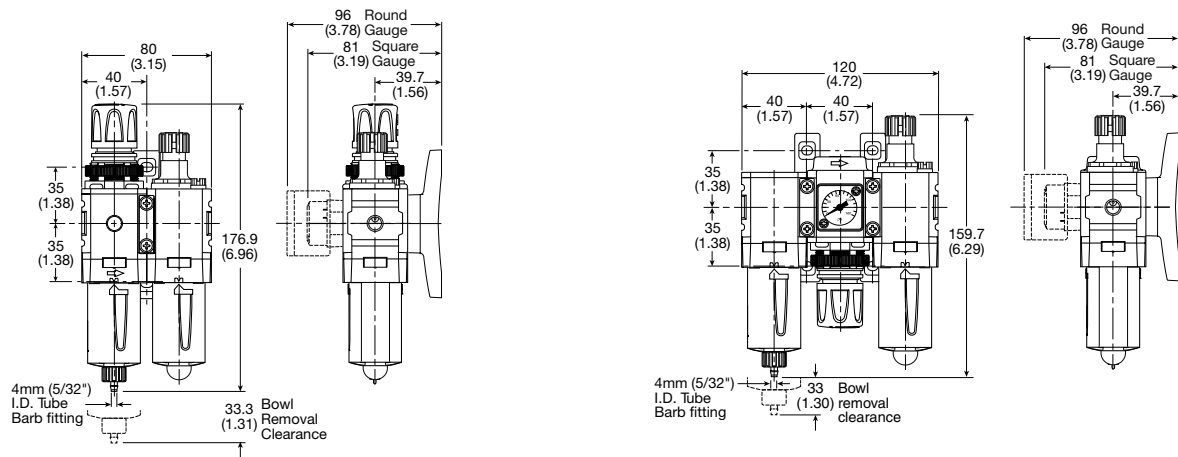
<b>Combination type</b>	<b>Bowl type</b>
F/R+L <b>A</b>	Poly bowl with bowl guard <b>G</b>
F+R+L <b>B</b>	Metal bowl with sight glass <b>S</b>
F/R <b>N</b>	

**Note:** All bowl types are the same for each component  
**Example:** If a "G" is specified for a F+L, both units would get a poly bowl with bowl guard.

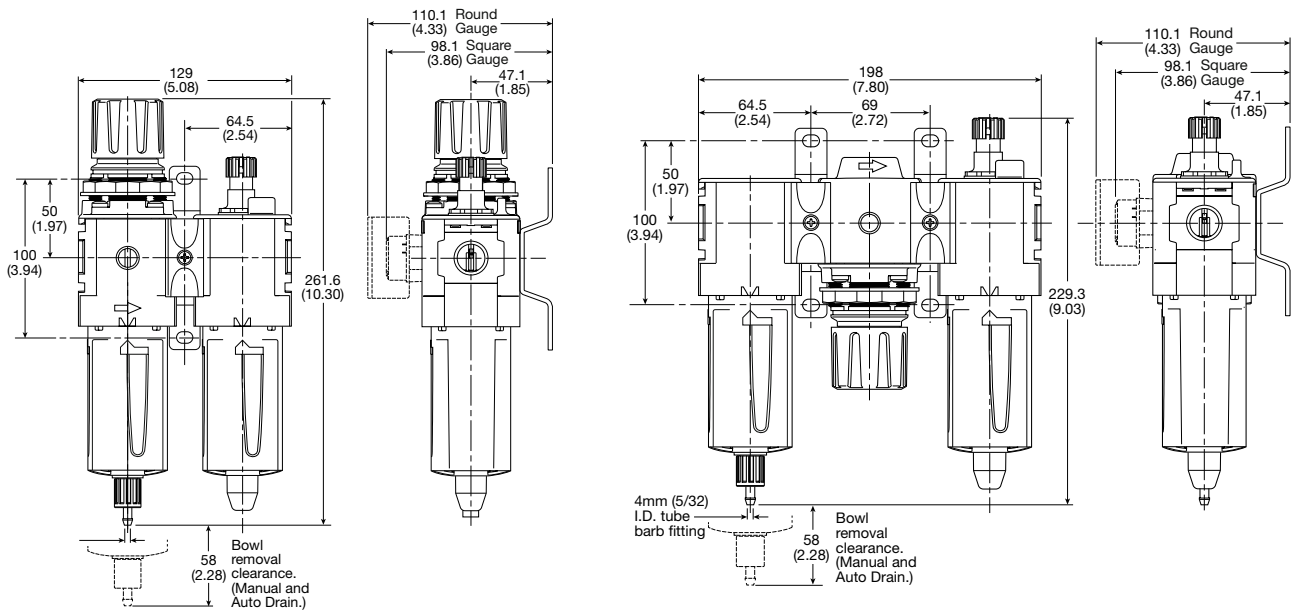


**Popular Combination Dimensions** mm (inches)

**P31C**



**P32C**



**P33C**

